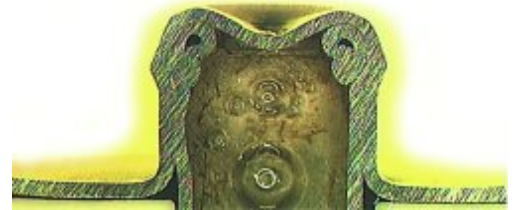


Solving the Wristband Snap Release Problem

by E. E. Bliley, [Lucent Technologies](#)

Entire article at www.evaluationengineering.com/archive/articles/0601cope.htm

“Figure 3 (right) illustrates a cross section of the two pieces of a formed snap after assembly onto a wristband. The riveting operation produced significant distortion of the snap head and body. This profile is responsible for the lower breakaway force distribution shown in Figure 1.”



“**Figure 4** (right) is the cross section of a machined snap. Because of the solid construction and precise machining, it appears completely different than the formed snap and explains the corresponding difference in the breakaway force distributions.”



Used with permission of author